



GAT MONTHLY MEMBERSHIP PROGRESS REPORT

Results as of: 10/31/2022

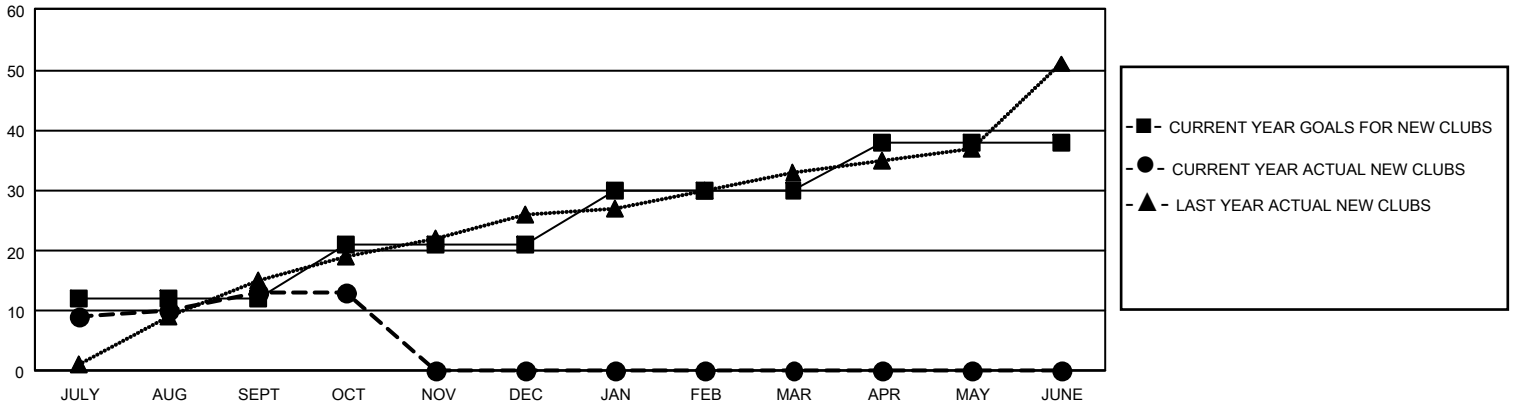
GMT Constitutional Area 8, Group B

REPORT DOES NOT INCLUDE CLUBS IN UNDISTRICTED AREAS.

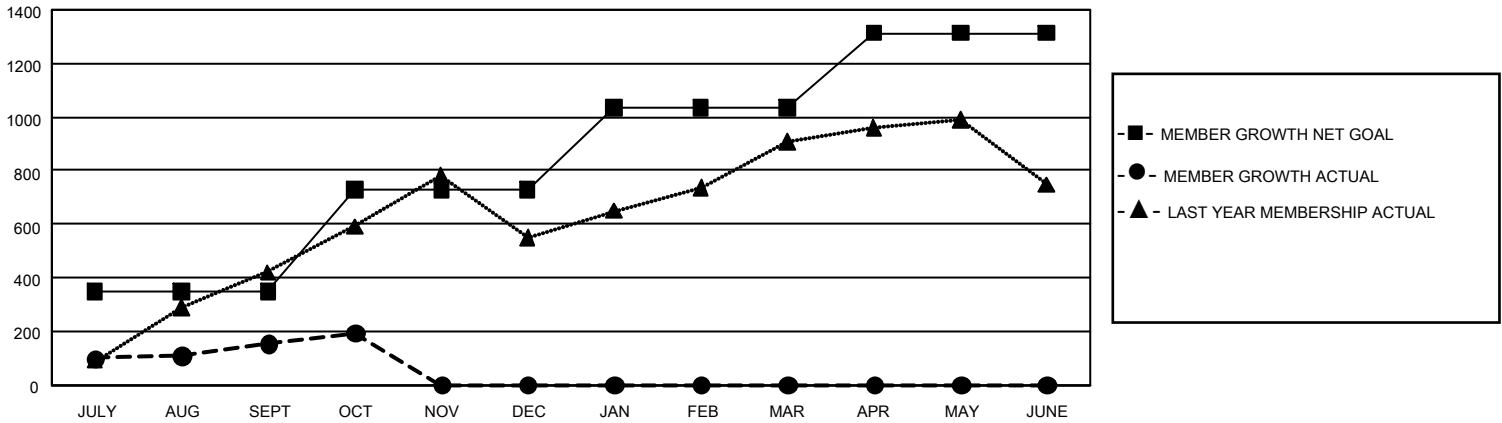
Clubs			
RESULTS FOR 2022-2023			
QUARTER	NEW CLUB GOAL	NEW CLUBS	DROPPED CLUBS
JULY/AUG/SEPT	36	13	8
OCT/NOV/DEC	27	0	0
JAN/FEB/MAR	27	0	0
APR/MAY/JUNE	24	0	0

Members			
RESULTS FOR 2022-2023			
QUARTER	MEMBER GROWTH NET GOAL	MEMBER GROWTH ACTUAL	DROPPED MEMBERS ACTUAL (including transfers)
JULY/AUG/SEPT	350	546	355
OCT/NOV/DEC	380	142	81
JAN/FEB/MAR	305	0	0
APR/MAY/JUNE	278	0	0

GOALS AND ACTUAL NEW CLUBS CUMULATIVE



GOALS AND ACTUAL MEMBERS CUMULATIVE



DROPPED CLUBS: 8	
DROPPED MEMBERS	
DECEASED	14
CLUB CANCELLED	133
OTHER	291
TOTAL	438

153 CLUBS OF 450 ADDED 1 OR MORE NEW MEMBERS

[CLICK HERE FOR CUMULATIVE MEMBERSHIP DATA](#)

<u>GENDER DISTRIBUTION</u>	
MALE	6,434 (57.92%)
FEMALE	4,673 (42.07%)
NON BINARY	0 (0.00%)
PREFER NOT TO ANSWER	1 (0.01%)
TOTAL FAMILY UNIT MEMBERS	875
FAMILY MEMBERS PAYING HALF DUES	497